



ALL-ROUND  
PERFECTION.



COMPANY

**WEPF** GmbH  
SCHLAUCH-ROHR-TECHNIK

1009 08 NE M D t gh d occa defire C

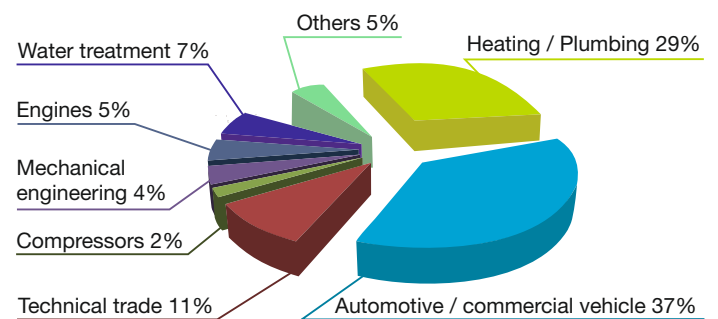
## 2 TABLE OF CONTENTS

About us .....	3
History .....	4
Company development .....	5
Delivery program .....	6
Pipe technology .....	8
Braid technology .....	10
Hose technology .....	11
Soldering technology .....	12
Corrugated pipe technology .....	14
Laser marking .....	16
Quality .....	17
Tool design and constuction .....	18
Looking ahead .....	19

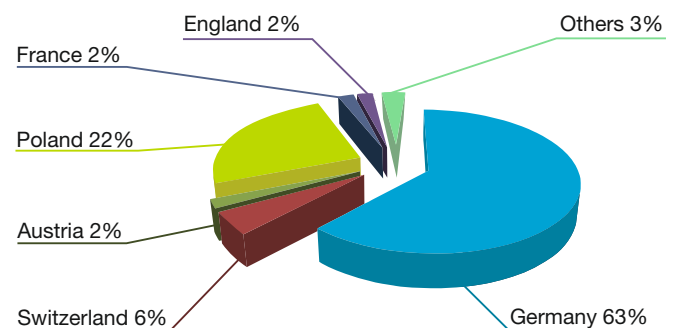
### REFERENCES



### SECTOR DISTRIBUTION



### EXPORT QUOTA





## AIMS LINKS TOGETHER

The core business of WEPF GmbH is the production and distribution of technical hose, pipe and corrugated pipes, the trade with the associated connecting parts, the soldering and annealing of steel and stainless steel parts, as well as the braiding of hoses.

In doing so, the targeted combination of innovation and continuity plays a decisive role in our way of working.

You as our customers benefit from short decision-making processes, high delivery reliability and best quality. Use our many years of experience as well as our in-depth know-how for your success.

You can rely on us and our products from the individual production to the standard part.

Our certified quality management system according to DIN EN ISO 9001 gives you the security for the high quality of our processes.

We rely on long-term and partnership-based relationships and provide you with new ideas and enthusiasm.



*Klaus Wetzel, managing director and owner*

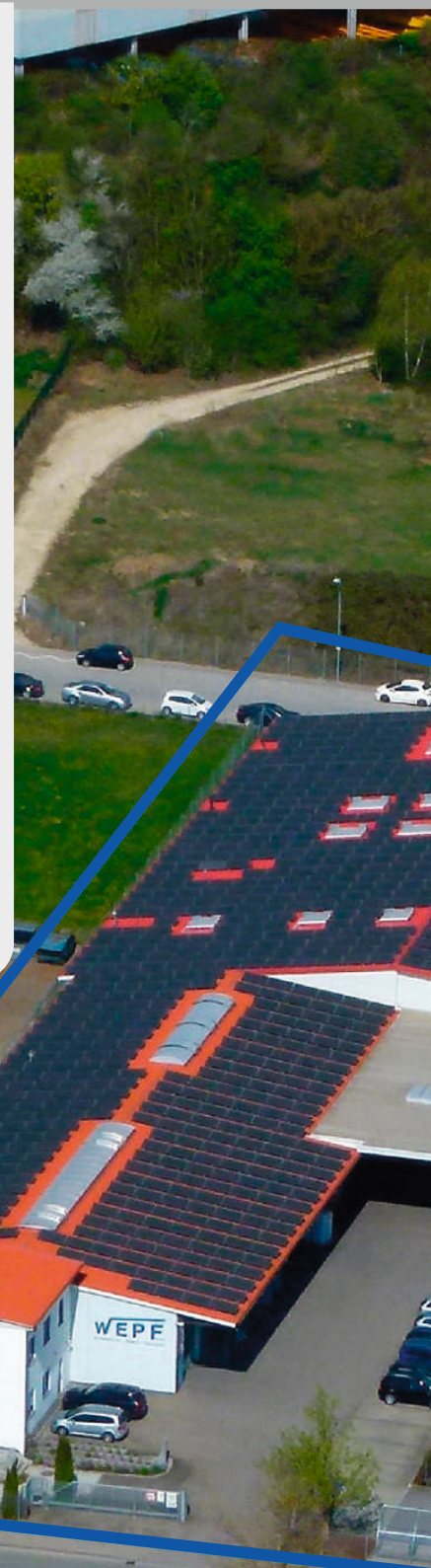




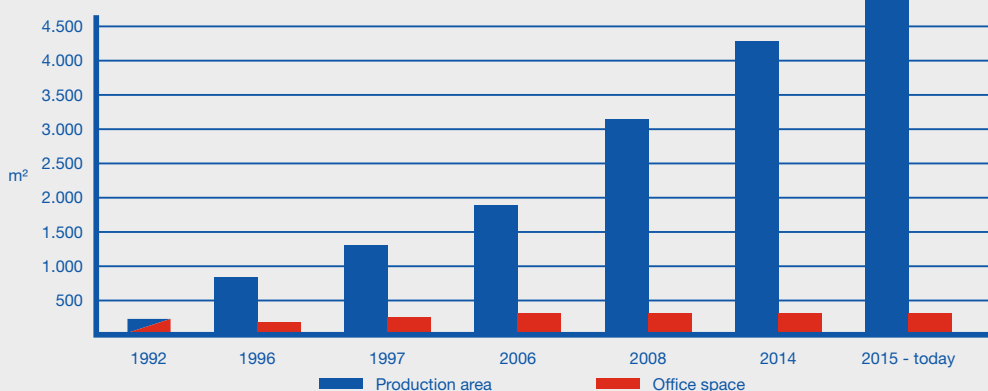
## THE RIGHT AT THE TIME

- 1992:** Founding of WEPF GmbH, hose-pipe technology in Ehingen-Dettingen on 07.01.1992 by Klaus Wetzel and Gebhard Pfriendler.
- 1996:** New construction in today's location in Ehingen (Max-Planck-Straße 15) with expansion of the production area to approx. 700 m<sup>2</sup>.
- 1997:** 1. expansion to approx. 1,100 m<sup>2</sup> and the creation of a separate hose plant.
- 1998:** Recording of the pipe technology division.
- 2002:** WEPF becomes an apprenticeship company and certifies the existing QM system according to DIN EN ISO 9001.
- 2006:** Klaus Wetzel becomes the sole managing director and owner.
- 2007:** 2. expansion with extension of the pipe construction and expansion of the office building.
- 2008:** 3. expansion with the creation of a separate tool shop and enlargement of the training workshop. Purchase of an adjacent commercial area of approx. 6,000 m<sup>2</sup>.
- 2014:** Expansion of the production area by further 1,000 m<sup>2</sup> by the construction of an additional production hall.
- 2015:** For the time being, the last expansion section has been extended by an additional 500 m<sup>2</sup> for the accommodation of the new soldering technology division and the expansion of the existing waveguide division.
- 2017:** Commissioning of a laser marking machine for component identification. WEPF celebrates its 25th anniversary.
- 2019** Acquisition of a semi-automatic hose assembly device.
- 2020** Thomas Meier is appointed as additional managing director. Commissioning of a fully automatic long goods warehouse with 157 cassettes and an additional roller burnishing machine for pipes up to 60 mm outside. Acquisition of a welding robot for welding steel and stainless steel parts.

Today, the entire production area covers approx. 4,500 m<sup>2</sup>, therefrom 350 m<sup>2</sup> in house tool shop on an approximately 11.500 m<sup>2</sup> large company estate.



## GROWTH







Welding robot



Fully automatic long goods warehouse



## OUR COLUMNS

More than 60 experienced and motivated employees, including 6 trainees, an always technically up-to-date machine park, decades of accumulated know-how, high quality requirements and reliable delivery reliability are the cornerstones for a successful cooperation with our customers.

Many of our employees can successfully look back on a membership of more than 10, 20 or even 26 years.



## 6 DELIVERY PROGRAM



### HOSE COMPONENTS IN STOCK

Variety and quality: In our large, well-stocked warehouse you will find exactly the hose components you need. We tailor our offer according to the current needs of the market and constantly expand our product range.

For a large number of items, we guarantee extremely short delivery times.

Whether pipe bends, nuts, sealing rings or squeeze fittings - in the area of the connecting parts for the fluid technology, WEPF hardly fits every wishes.

Please ask for our extensive product range.





## HOSES SOLD BY THE METER AND ACCESSORIES

Use our extensive stock of hose metering products and fittings for self-assembly of hose lines. Choose freely from our versatile offer of different hose qualities and dimensions.

Deliveries of hoses according to individual specifications in ring form or coils - everything is possible.



## PRECISE ENGINEERING

In our pipe processing department, we manufacture special pipe systems according to your specifications. We are in close contact with your designers.

Qualified specialists process steel, stainless steel, brass and copper pipes in the desired quantity. In order to achieve this and to meet the highest quality requirements, we use our best coordinated machine park.





### WEPF PIPE TECHNOLOGY

- Process development for new products and prototyping, tailored to your specifications
- Qualification patterns and pre-production parts
- Construction of pipe systems and pipe-hose combinations
- Precise upsetting, flanging, rolling, collar forming, soldering, welding, galvanizing and coating
- Bending and tube finishing up to an outer diameter of 60 mm by cold forming





# 10 BRAID TECHNOLOGY

## TRADEMARK

Since 1993, we have registered had our braidings by the German Patent Office as a trade mark (No. 640 624 and No. 399 57 800).

## SAFELY BRAIDED

In our own braiding department we manufacture braidings of stainless steel wire, galvanized iron wire or monofilaments. Please contact us for further braiding.





## WIDE FIELD OF APPLICATION

We assemble hoses up to DN 50 for a wide range of applications such as:

- heating oil
- fuel (petrol, diesel, biodiesel, kerosene)
- engine, gearbox or hydraulic oil
- drinking water
- water
- cooling water
- foods
- chemicals
- air

## FLEXIBLE TUBING

Good by experience: we have been producing hoses for a wide range of applications in consistently high quality. As a full-service supplier, braiding, cutting, assembling, pressing and assembling are the core area of our hose technology according to your specific requirements.



## 12 SOLDERING TECHNOLOGY

### OVEN PASSAGE 250 x 200 mm

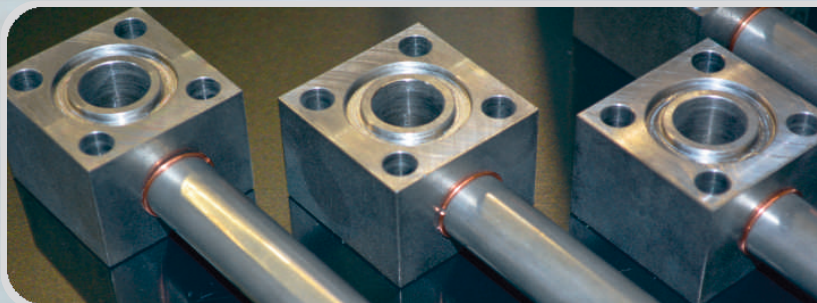
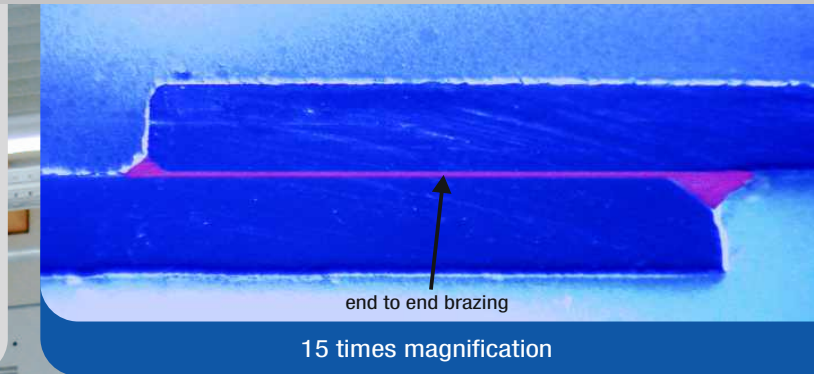
In our hydrogen continuous soldering furnace, we braze and anneal steel and stainless steel parts under a protective gas atmosphere (hydrogen-nitrogen mixture). Fast, process-safe and at a fair price-performance ratio.





## QUALITY MADE VISIBLE

Each workpiece we solder is subjected to a 100% visual inspection. In addition, we are able to respond to specific customer requirements and, for example, perform leakage tightness tests with air under water or leak tests. The preparation of micrographs as well as corresponding analyzes of the soldering results achieved are also possible.

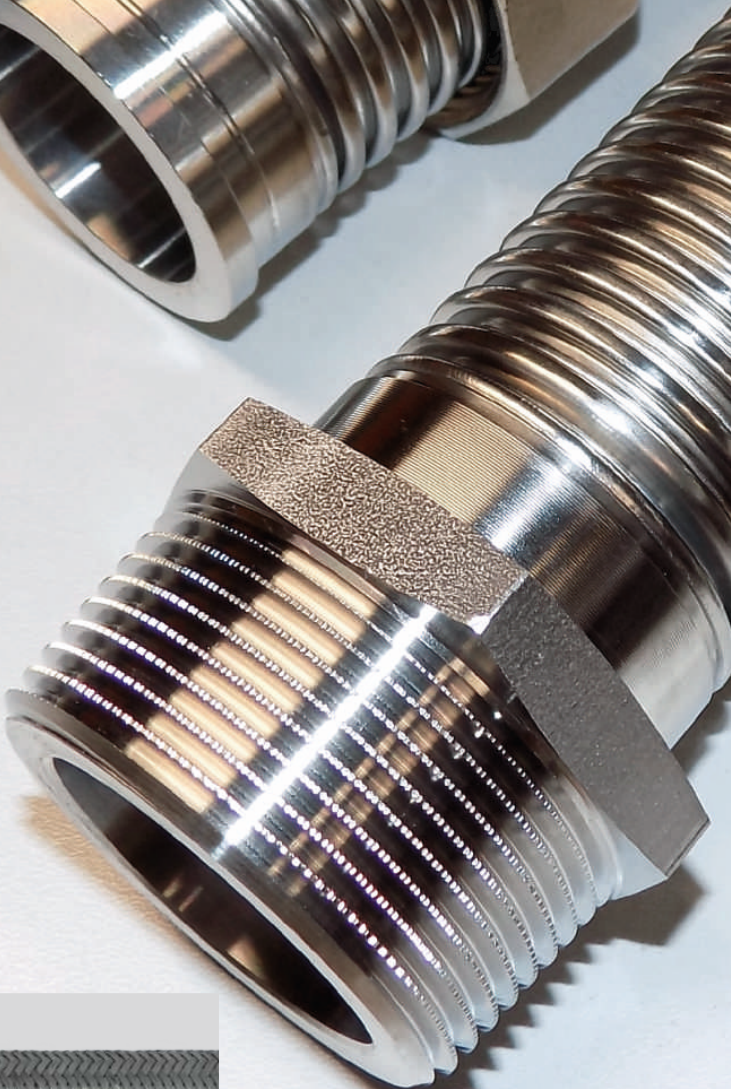






SOLUTION-ORIENTED

We produce high quality corrugated pipelines with welded connections or with mounted brackets according to your individual lengths and bending requirements.



EDWS




Stainless steel 1.4404 (AISI 316L)  
parallel weavy,  
longitudinally welded,  
mechanically shaped,  
**normal** curling.

EDWR



Stainless steel 1.4404 (AISI 316L)  
parallel weavy,  
longitudinally welded,  
mechanically shaped,  
**wide** curling.

EDWSN



Stainless steel 1.4404 (AISI 316L)  
parallel weavy,  
longitudinally welded,  
mechanically shaped,  
**normal** curling,  
**braiding** with stainless steel wire.





## QUALITY

We perform a 100% leak test with air under water in every workpiece equipped with welded connections.  
In the end you get a quality product from the company WEPF, which holds what it promises.





## PERMANENT

With our powerful labeling laser, article numbers, check digits, company logos, serial numbers or current code standards such as QR or barcodes can be applied to a wide range of materials. We thus offer you the possibility of permanently marking your components according to your individual specifications, to achieve a clear traceability of your finished parts.



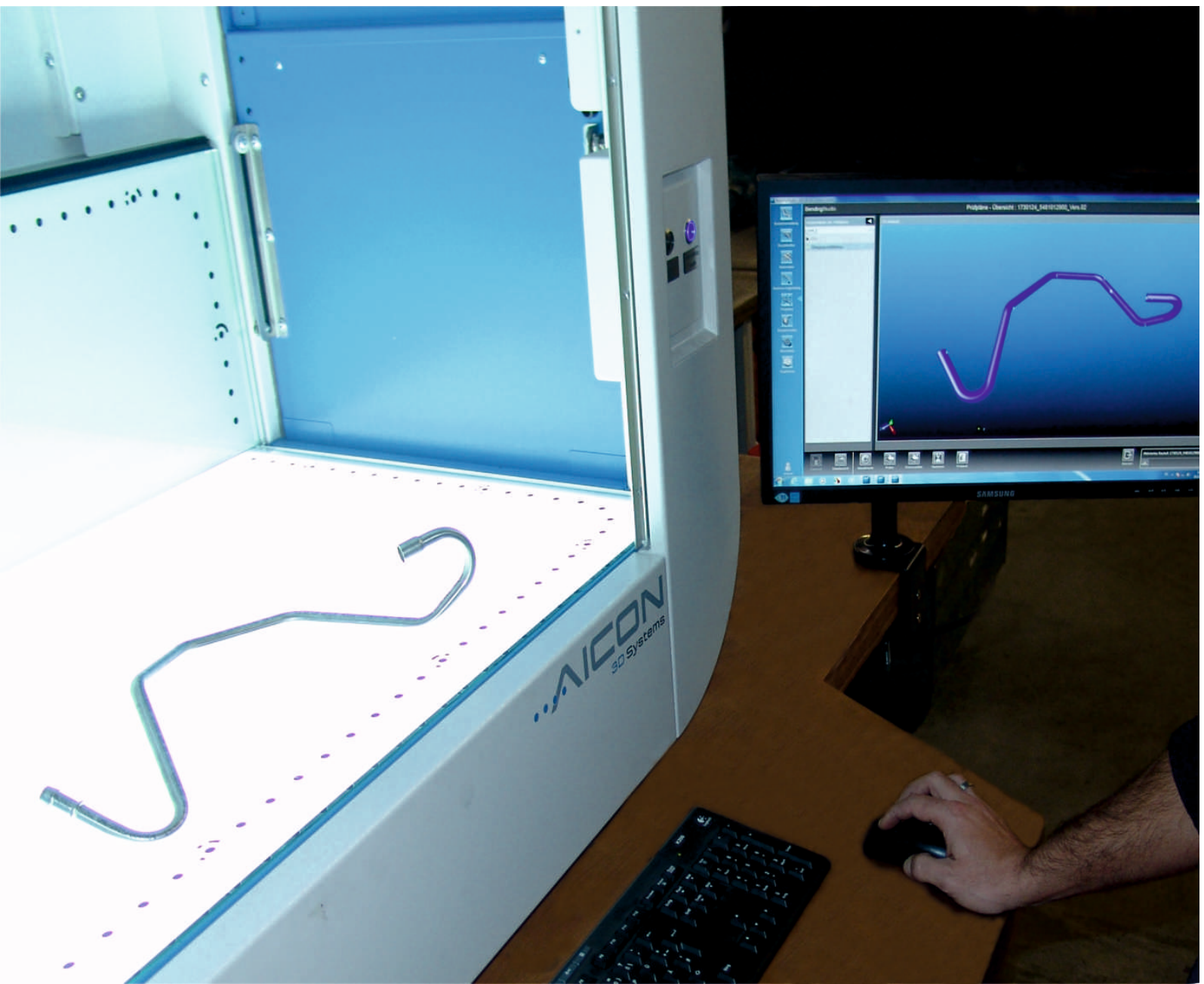
## CERTIFIED

Put with us on reproducible quality. We have set ourselves the goal of adhering to the zero-error principle as well as 100% delivery dependability.

Our quality management system according to DIN EN ISO 9001, certified by TÜV-Süd, shows you the high quality of our processes.

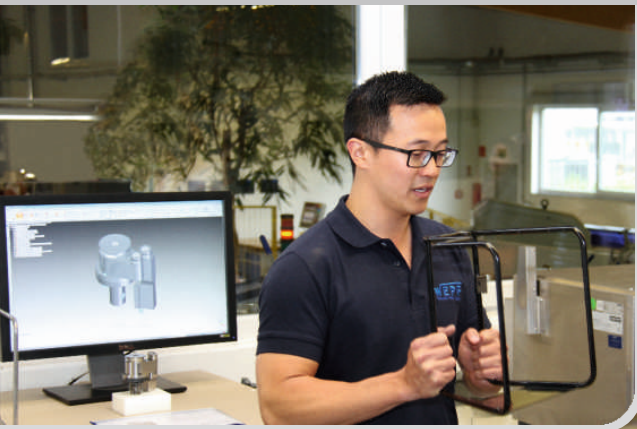
We live quality:

- FMEA
- 3D measuring cabin
- creation of checking gauges
- current QM techniques
- creation of exact measurement reports
- large, ultra-modern measuring room
- quality planning (APQP)
- welding position for the WEPF soldering technique
- carry out various pressure and leakage tests
- sophisticated, computer-controlled coordinate measuring systems for testing and securing your requirements





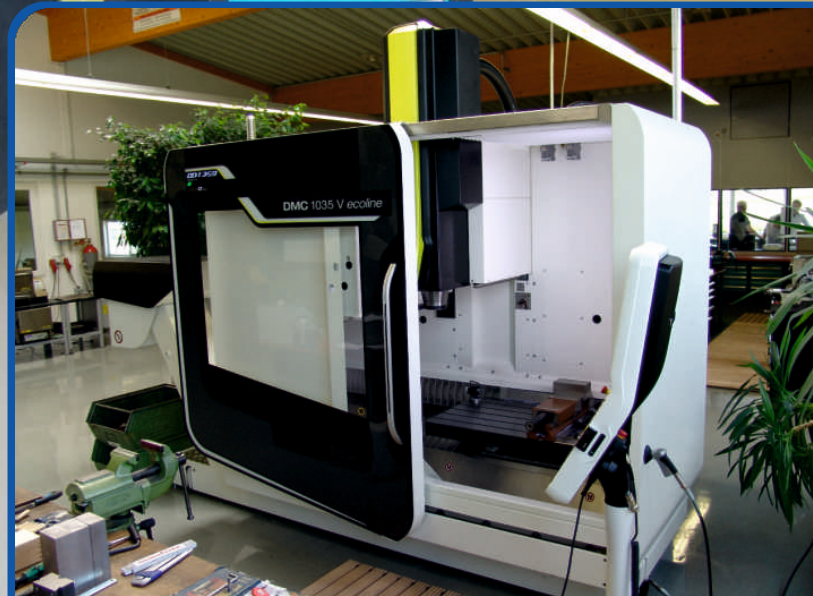
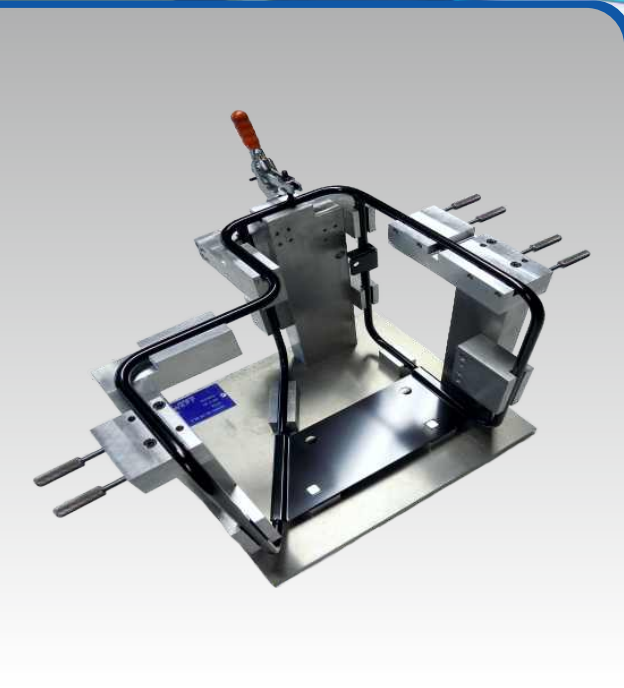
## 18 TOOL DESIGN AND CONSTRUCTION



### ALL FROM ONE HAND

We manufacture prototypes, test gauges, tools or small batches in our over 350 m<sup>2</sup> large tool shop. This is equipped with the latest CNC-controlled workstations, such as a 4-axis machining center as well as milling and turning centers.

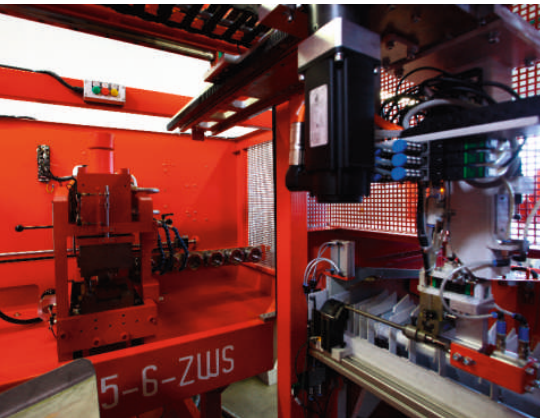
Whether it is the production of quality samples, pre-production parts or the creation or replacement of serial tools - we perform precision work.





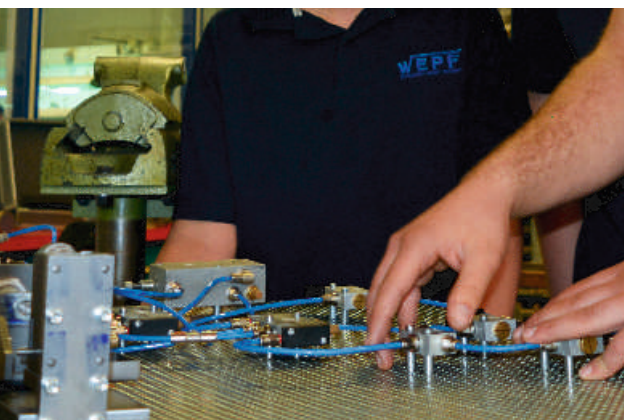
## IDENTIFY POTENTIALS

For us, the future doesn't start tomorrow. We're already actively creating the foundations of sustainability and long-term competitiveness today. In the process, we place particular emphasis on the following areas:



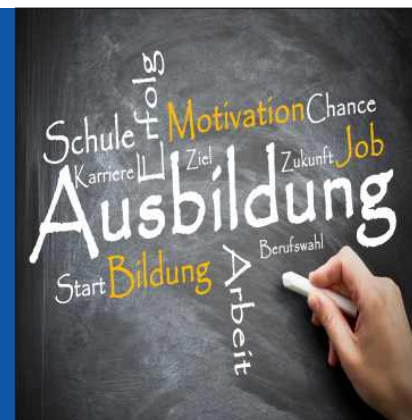
### TECHNOLOGICAL KNOW-HOW

We are specifically investing in future-oriented technologies and closely monitoring the current market situation. In addition, we regularly participate in international trade fairs and continually expand our product range without jeopardizing our existing quality level.



### YOUTH DEVELOPMENT

We are convinced by a good education, because the quality of our products starts with the competence of our employees. We are a training company, we promote talents and carry out intensive promotion of new talent. In addition, we strengthen our team by specifically hiring qualified skilled workers.



### WORKING ATMOSPHERE

Everyone counts with us regardless of gender or nationality. Flat hierarchies as well as a friendly, respectful deal with one another encourage team spirit and motivation. In addition, we offer a work environment through "green islands" in our halls as well as a green outdoor recreation area in which each employee can rest in breaks and gain new energy.



**WEPF - for over 28 years and also in the future  
your reliable partner.**





OTHER PRODUCT AREAS

EINE RUNDE SACHE.

Standard delivery programme

WEPF SCHLAUCH-ROHR-TECHNIK

EINE RUNDE SACHE.

FLECHTECHNIK SCHLAUCHTECHNIK

WEPF SCHLAUCH-ROHR-TECHNIK

EINE RUNDE SACHE.

LÖTTECHNIK GLÖHTECHNIK

WEPF SCHLAUCH-ROHR-TECHNIK

EINE RUNDE SACHE.

WELLROHRTECHNIK

WEPF SCHLAUCH-ROHR-TECHNIK

WEPF GmbH  
Max-Planck-Straße 15  
D-89584 Ehingen (Donau)  
Germany  
Phone +49 7391 7065-0  
Fax +49 7391 7065-20  
info@wepf.de  
www.wepf.de

EINE RUNDE SACHE.

INDUKTIONSLÖTEN

WEPF SCHLAUCH-ROHR-TECHNIK

EINE RUNDE SACHE.

ROHRTECHNIK

WEPF SCHLAUCH-ROHR-TECHNIK

EINE RUNDE SACHE.

HANDSCHLAUCHPRESSE mit integriertem Schlauchabschneider  
Hand-crimping machine with integrated hose cutter

WEPF SCHLAUCH-ROHR-TECHNIK

